

Main points for “Pentwater 2035”



From April 17-19, 2015, the Pentwater community gathered to develop a vision for the future. Participants in the three-day “design charrette” engaged in an iterative process to develop a “preferred alternative” – a vision incorporating the waterfront as an integral part of your community's future.

Overview of Suggestions a Sustainable Small Harbor in Pentwater

1. Promote Economic Development by introducing Harbor & Waterfront Drivers
 - a. Establish a “Pentwater Marine Technology Institute”
 - i. Phase I: Wooden Boat Building School (boat launch site), accommodating youth sailing program
 - ii. Phase II: Vessel repair and boatworks (Charlie’s Marina property, Pentwater Wire, other)
 - b. Expand Municipal Marina (current site and near boat launch)
 - c. Destination restaurant (Snug Harbor Marina pier)
 - d. Extend dredging cycle by dredging north side of pier; explore funding mechanisms to fund ongoing dredging and infrastructure maintenance work
2. Protect Natural Systems
 - a. Revegetation to reduce beach erosion and reduce amount of sand blown into channel (Mears State Park beach at north side of channel pier)
 - b. Add underwater fish habitat in Pentwater Lake (e.g., near sandbar, as advised by fisheries biologists)
 - c. Add bioswales and other low impact development practices on Hancock St. to provide natural filtration for stormwater (this is in addition to existing stormwater infrastructure)
3. Improve Connectivity
 - a. Install a chain ferry to link pedestrian/bike access across channel
 - b. Install a public boardwalk on 6th St
 - c. Develop “complete street” to accommodate bike lanes, sidewalks, parking and traffic lanes for Lowell St. (and in the future, for Hancock St. and 6th St.)
 - d. Refer to overall “Connectivity Map” for long-term vision for walking, biking, public transport concepts
4. Assign Land Use to honor village character and stimulate new economy
 - a. Consider future brownfield redevelopment for Pentwater Wire site
 - b. Infill at police station block (ground-floor retail, police substation, upper level residential)
 - c. Independent senior living facility at corner of Lowell St. and Hancock St

This vision was developed as part of the Sustainable Small Harbors Project. For more information, see: www.miseagrant.umich.edu/smallharborsustainability

For a link to the full "Work in Progress" presentation, see:

www.miseagrant.umich.edu/smallharborsustainability/get-involved/pentwater

PENTWATER 2035

SUN 9 AM

PREFERRED

- ① HARBOR W/ DRIVER/ECON DEV
PENTWATER MARINE TECHNOLOGY INSTITUTE
- ③ ALT ② MARINE CRAFT + TECH SCHOOL
- ② + SLIGHT REV YOUTH SAILING (P33112)
+ MUNI MARINA EXPANSION
+ DESTINATION RESTAURANT (P33112)

DIGITAL BASE - RACHEL

- ⑤ NATURAL SYSTEMS
LID ON HANCOCK
REVEGETATION (DUNE) LND
+ UNDER H2O FISH HABITAT (P33112) < Incidental
- ③ CONNECTIVITY
+ CHAIN FERRY (P33112) + CHANNEL POINTE
BOARDWALK on 6TH
+ COMPLETE STREET (1) SECTION (CONSTANCE)
OVERALL NETWORK - keep 25' LT VISION (LOWELL)

DIGITAL BASE - RACHEL

- ② + LAND USE
BENWIRE "FUTURE @ FIELD REDEV"
SENIOR HOUSING
INFILL @ POLICE STATION (P33112) < (P33112) + Police Station - Upper Level RES.



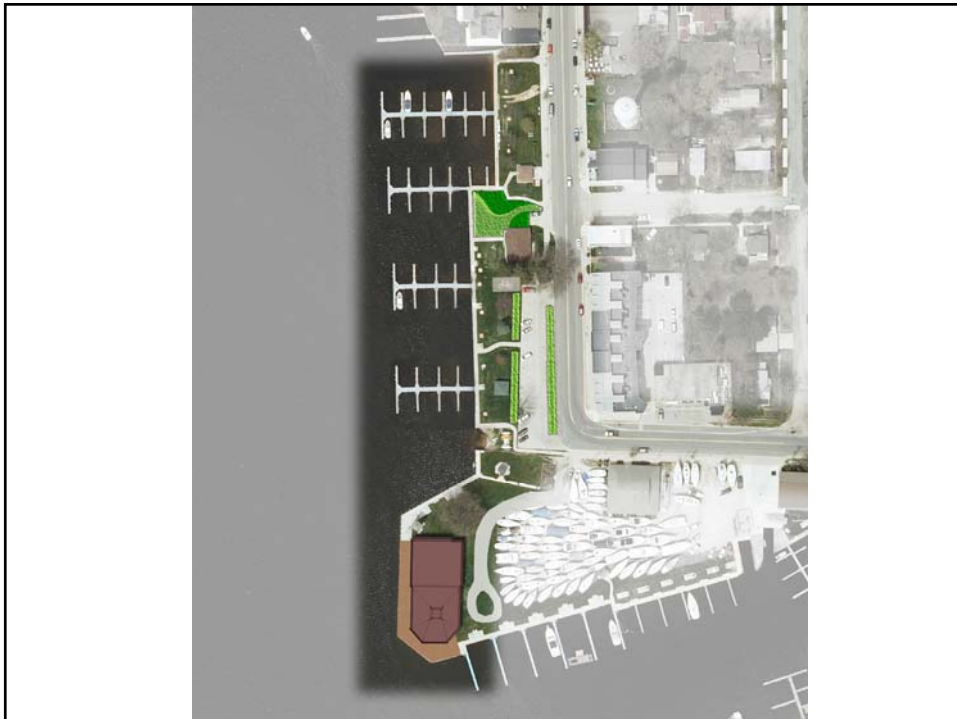
PENTWATER MARINE TECHNOLOGY
INSTITUTE

Harbor Waterfront Driver Economic Development



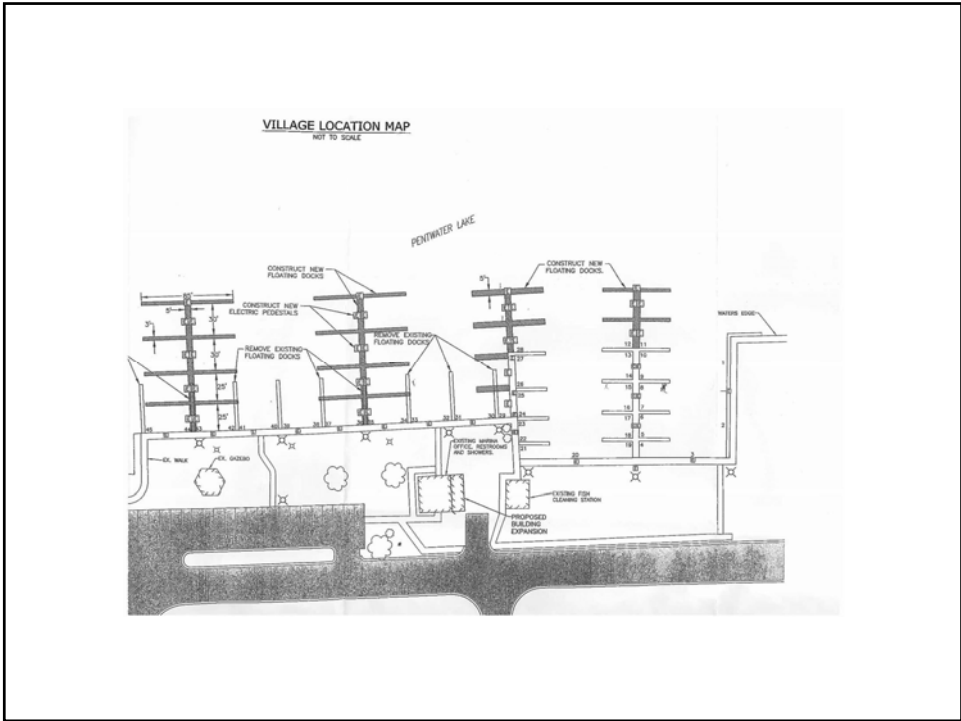


Destination Restaurant

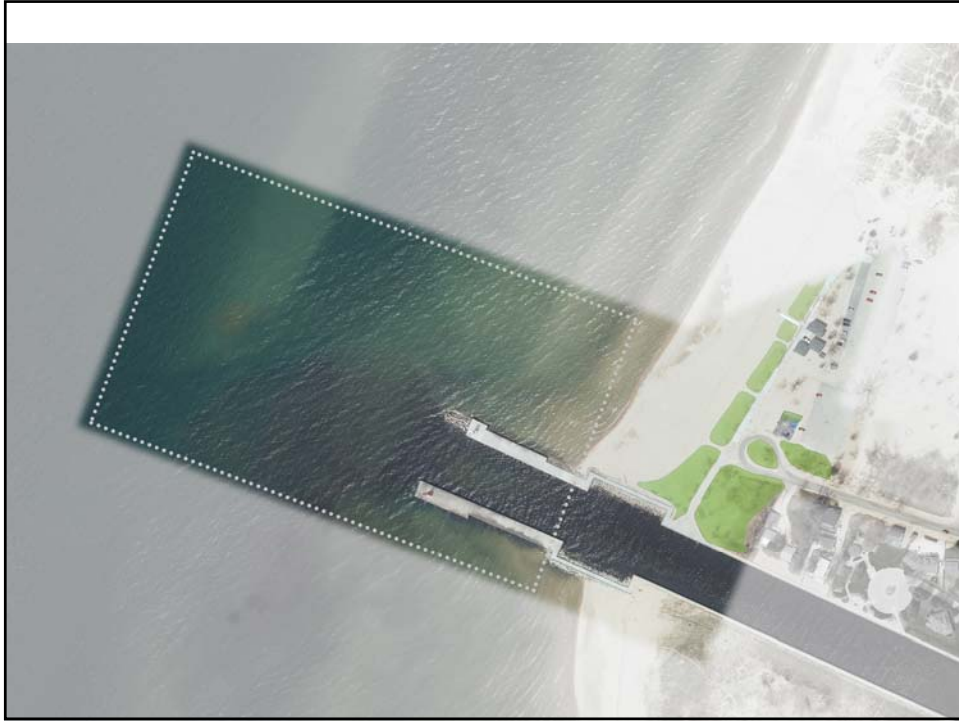








Natural Systems



Land Use



Connectivity





