

# PENTWATER 2035

SUN 9 AM

## PREFERRED

- ① HARBOR W/ DRIVER/ECON DEV  
 PENTWATER MARINE TECHNOLOGY INSTITUTE
- ③ ALT ② MARINE CRAFT + TECH SCHOOL
- ② <sup>Res. Distribution Program</sup> + SLIGHT REV. YOUTH SAILING <sup>PS&M</sup>  
<sup>Location to change</sup> + MUNI MARINA EXPANSION  
<sup>② Home</sup> + DESTINATION RESTAURANT <sup>TAN</sup>
- DIGITAL BASE - RACHEL
- ⑤ NATURAL SYSTEMS  
 LID ON HANCOCK  
 REVEGETATION (DUNE) <sup>LND</sup>  
 + UNDER H2O FISH HABITAT <sup>Incidental</sup>
- ③ CONNECTIVITY  
<sup>① Increase Rachel</sup> + CHANNEL POINTE  
 + CHAIN FERRY <sup>②</sup> BOARDWALK on 6TH  
 + COMPLETE STREET (1) SECTION <sup>CONSTANCE</sup>  
 OVERALL NETWORK - keep 20' LT VISION <sup>LOWELL</sup>
- DIGITAL BASE - RACHEL
- ② LAND USE  
<sup>①</sup> PENWIRE "FUTURE @ FIELD REDEV"  
<sup>②</sup> SENIOR HOUSING  
<sup>③</sup> INFILL @ POLICE STATION <sup>④</sup> (GE Retail + Police Station) - Upper Level RES.



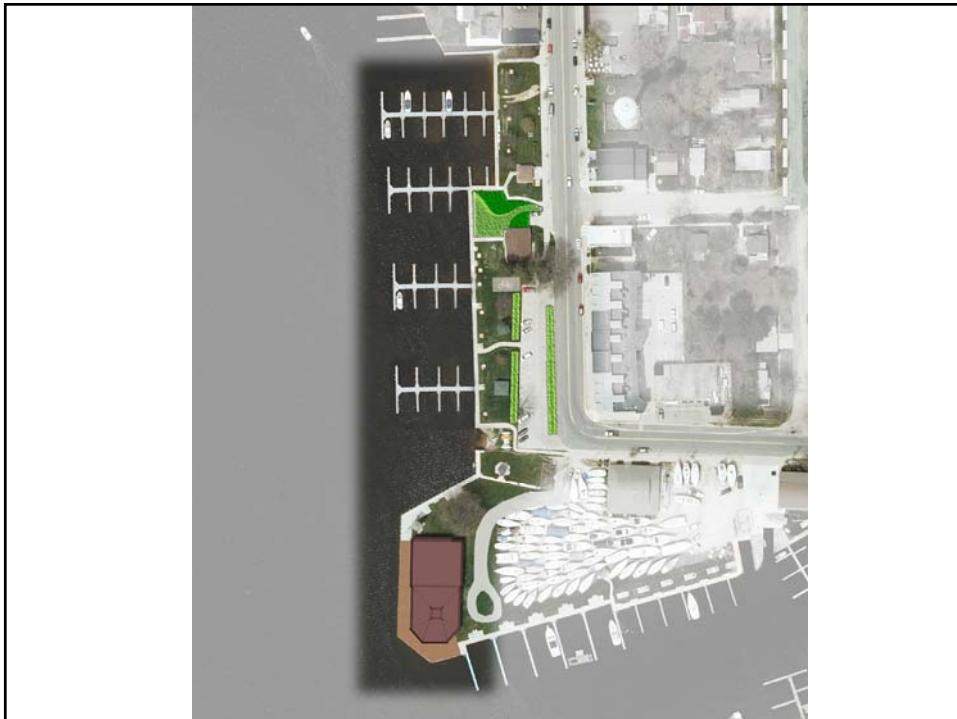
PENTWATER MARINE TECHNOLOGY  
INSTITUTE

## Harbor Waterfront Driver Economic Development



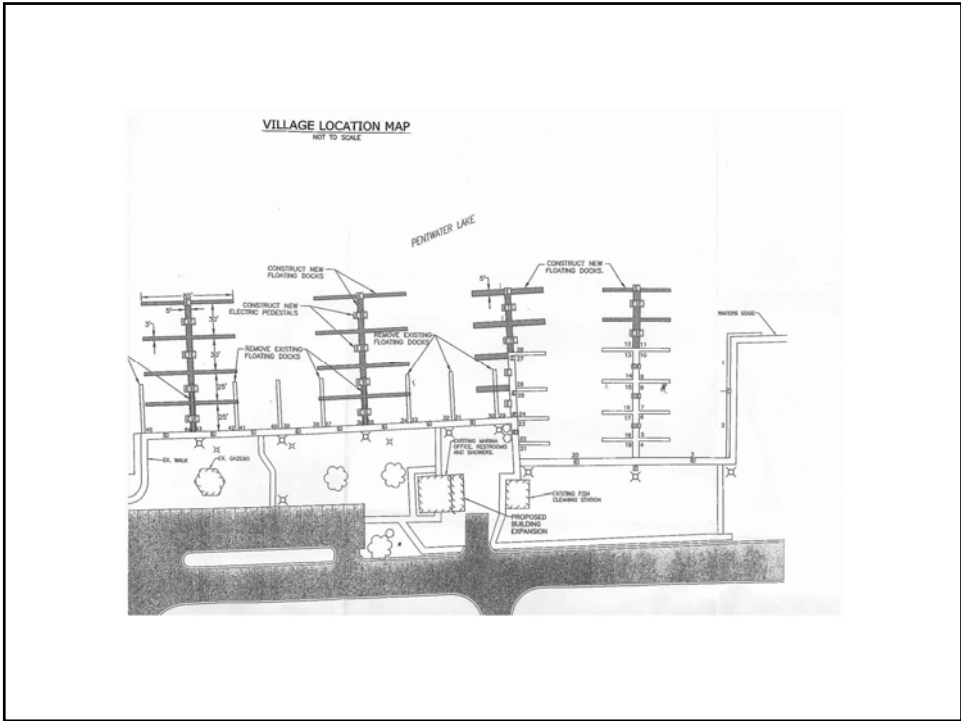


## Destination Restaurant



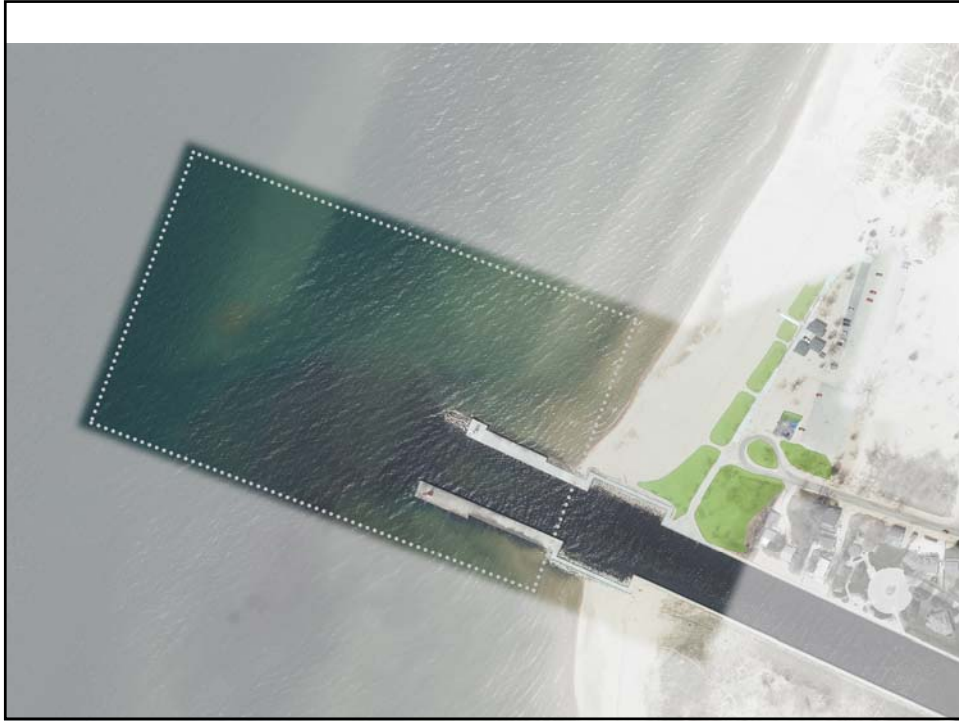






## Natural Systems





Land Use



## Connectivity





